

Fresh USA, Inc.

INSTALLATION INSTRUCTIONS

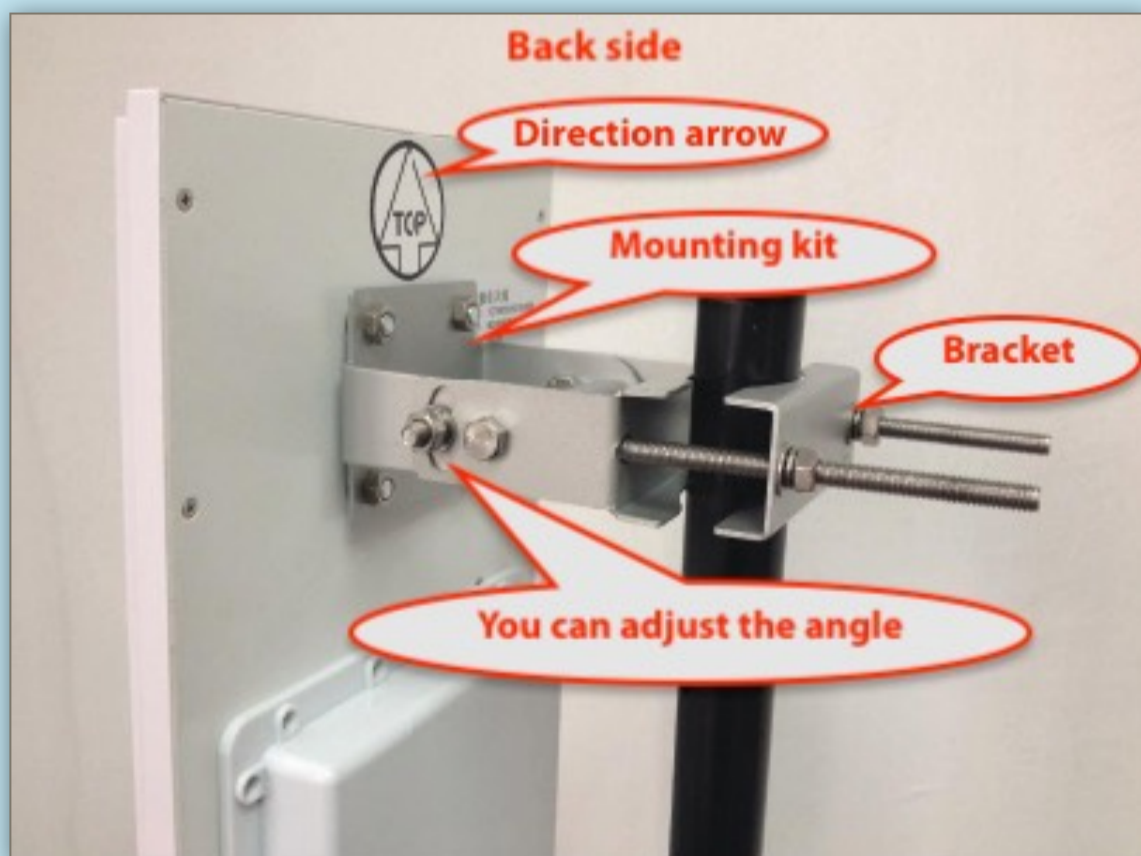
MONO ANTI-THEFT SYSTEM



By following this instruction you will receive an excellent anti-theft system with the ability to quickly inventory RFID UHF Package Contents:

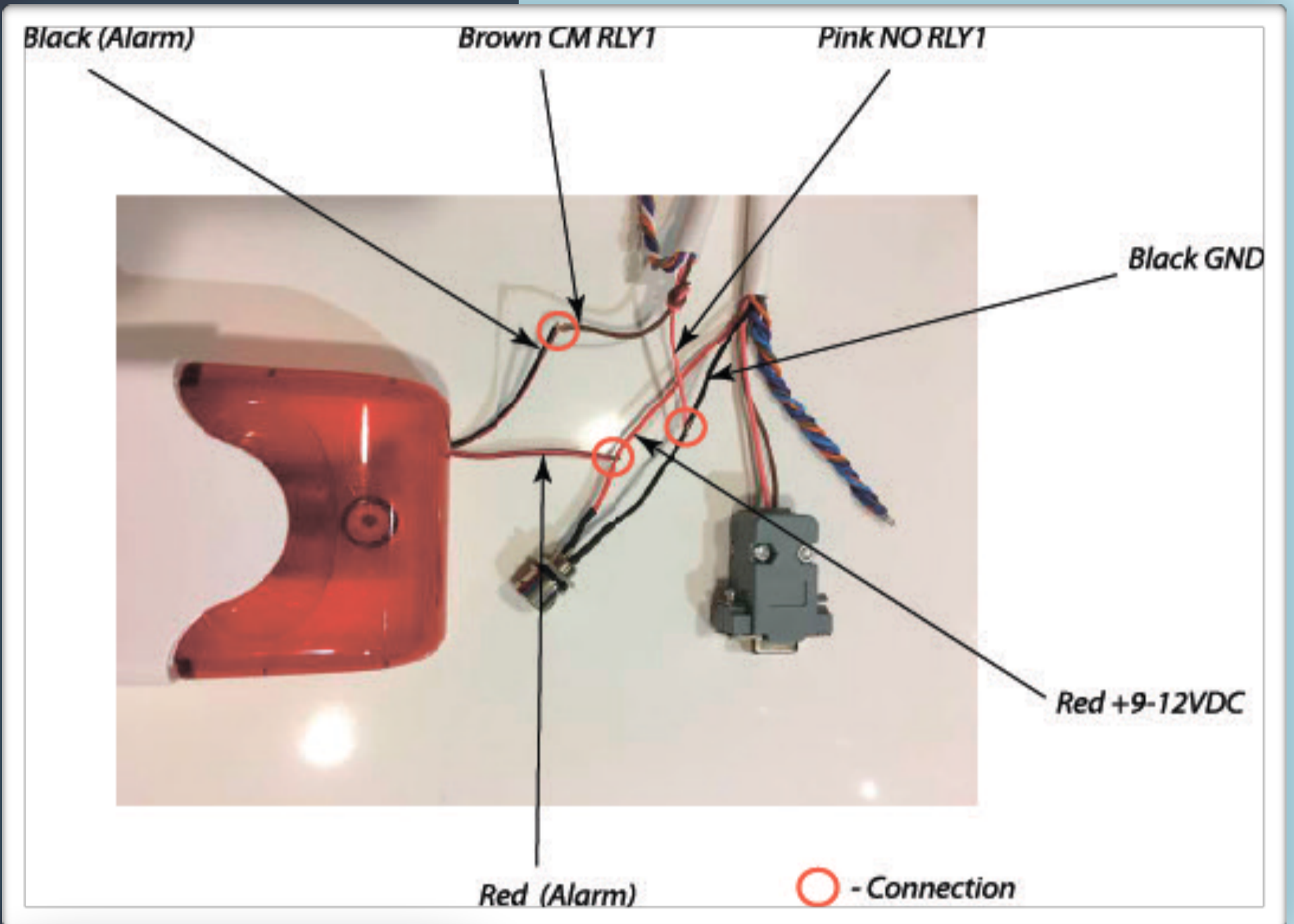
- Antenna - reader RFID UHF
- Power supply 110/220 volt
- Mounting bracket and fasteners
- Strobe alarm

- 1) Fasten the bracket above the door. You can also fix the bracket by hiding it behind the ceiling (if the ceiling does not have a **metal** surface).
- 2) Install the antenna reader by fastening it to the bracket. Note the arrow on the back side of the antenna. This arrow on the antenna should be directed towards the exit. From the protected area towards the exit. At the same time, this arrow should be located higher than the rest of the antenna reader. The antenna reader should have a slight slope.



You can fix the alarm strobe at any place convenient for you.

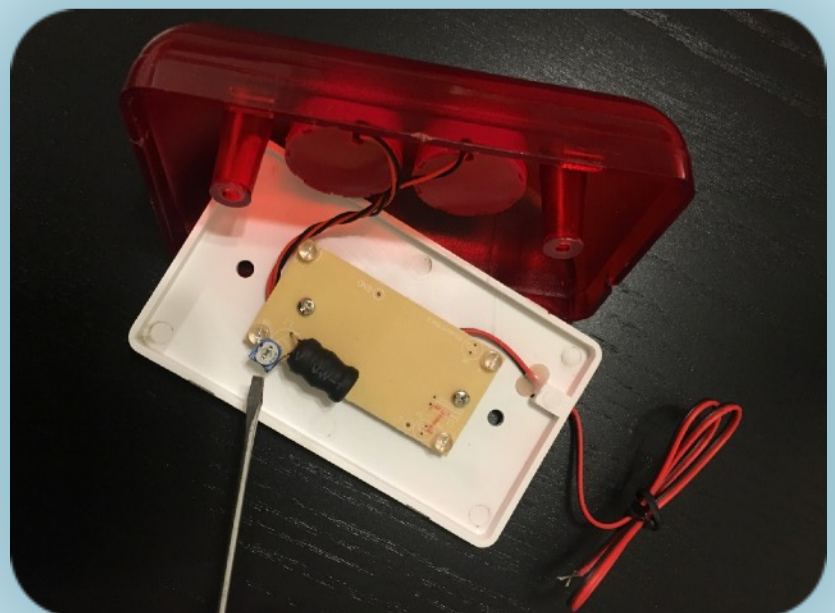
3) Connect the alarm strobe to the power antenna reader using 12 volt connectors, as shown in picture.



RFID Integrated Reader		RELAY	
Red: +9~12VDC	Black: GND	Pink: NO-RLY1	White: NC-RLY1
Pink: TXD	White: RXD	Brown: CM-RLY1	
L-Blue: DATA0	Blue: DATA1	Purple: NC-RLY2	Orange: NO-RLY2
Purple: 485R+	Orange: 485R-	Gray: CM-RLY2	
Gray: TRIGGER	Brown: GND		

S/N: 17480341 designed by Fresh USA
designed by Fresh USA

4) Open the strobe alarm cover. Turn the volume control to the level you want.



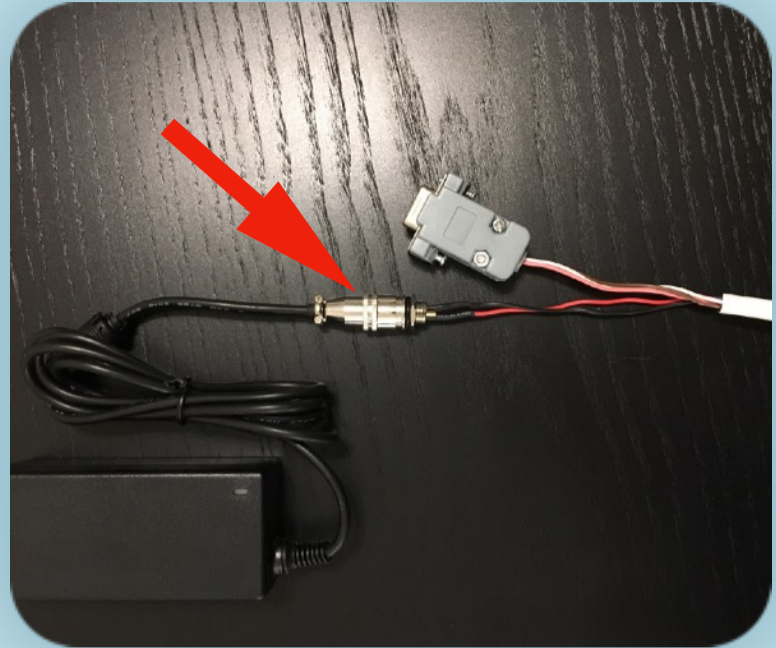
Alarm volume can be adjusted.

Antenna reader never has false positives.

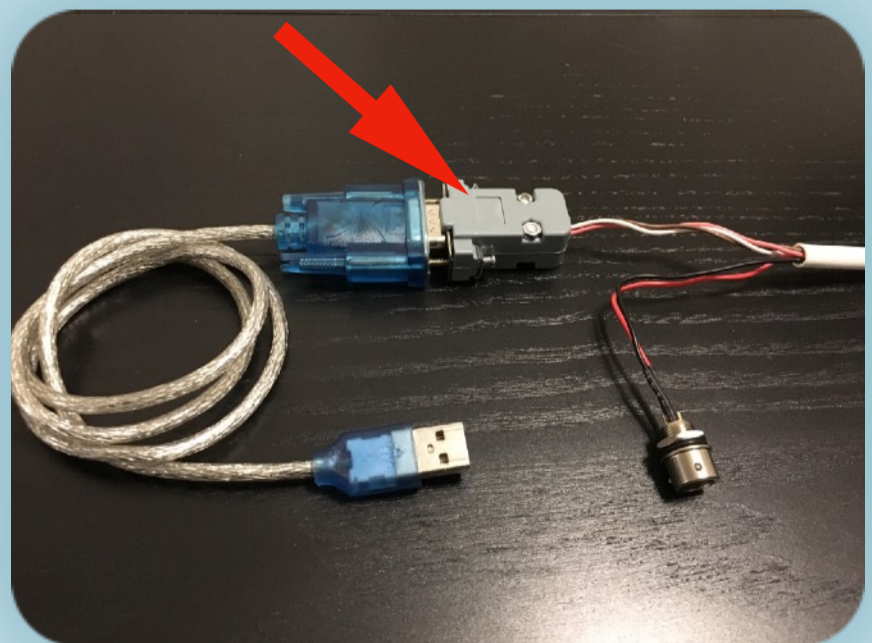
The antenna detects only tags associated with it or with tags available in the database.

- You can change the operating frequency.
- You can change the power of the antenna reader.
- You can change the tag binding code.
- You can change the IP address and port of each antenna reader.
- You can combine a large number of antenna readers into a common network.

5) Plug the power supply into a 110/220 volt outlet. Connect the power supply connector to the antenna reader connector.



6) Antenna reader has additional settings such as power (tag reading range), frequency and tag binding code. To do this, you need to use the "Configurator" application for Windows OS. To connect the antenna reader to the computer, use the RS232 (COM) and USB adapter.



7) If you are using software and a network connection, you need to use a connection through a router. See and follow the individual instructions for setting up the TCP/IP (Ethernet) connection.

Change IP address, port reader.

Fresh USA, Inc.

IMPORTANT!

Pay attention to the arrow located at the top of the reader antenna.

Install the antenna reader in accordance with the instructions.

